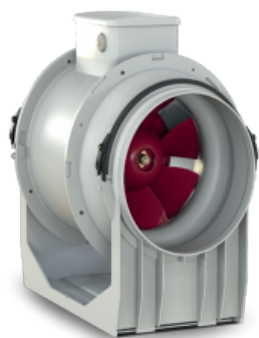


LINEO 100 ES (17159)

GENERAL DATA

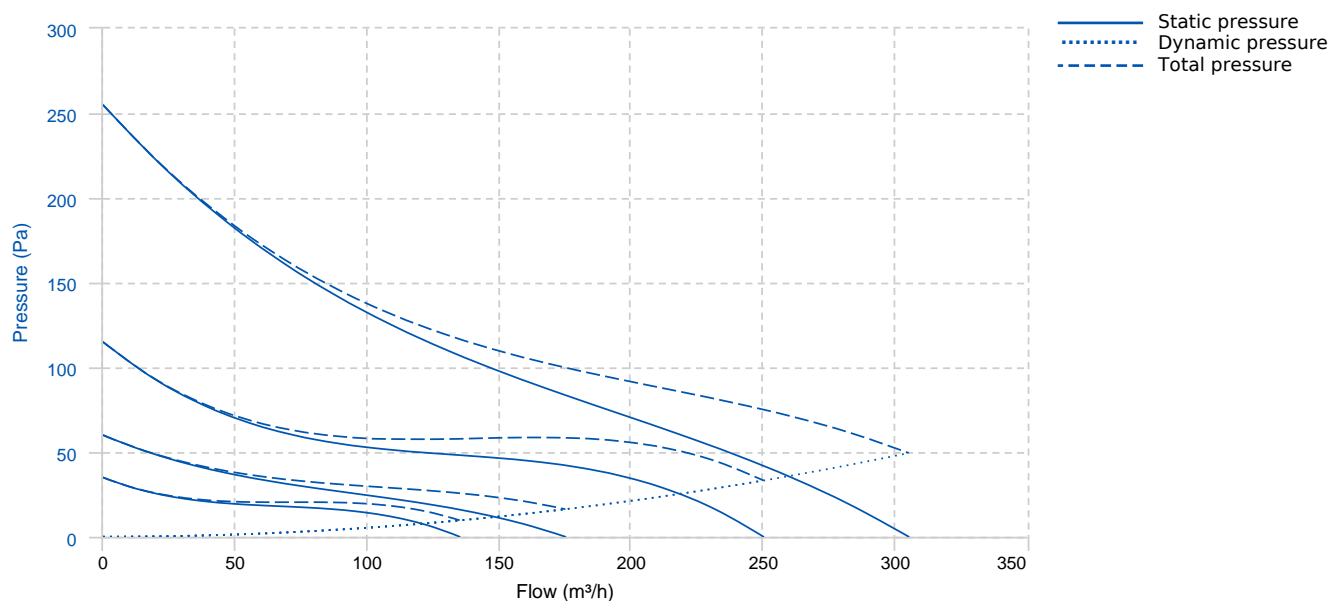


Energy-saving mixed flow fans

The appliances of the LINEO ES series adopt electronically controlled motors (EC brushless), which guarantee very low specific consumption. Speed adjustment is permitted by potentiometer (signal 0-10 V) or, alternatively, by using the two-speed option, selectable by external switch and can be set to installation in a predefined range.

- Fire resistant plastic resin construction, class E2, according to ISO EN 11925-2:2010, in areas overlooking the engine and electrical components.
- EC Brushless motor, thermally protected, with shaft mounted on ball bearing supports, combined with a helical-centrifugal impeller.
- High degree of water resistance: IPX5 (if installed in duct).
- Equipped with a safety device for over-temperature thermofuse.
- Speed adjustment via potentiometer (signal 0 - 10 V) or 2-speed switch (the two speeds can be set to installation in a predefined range).

PERFORMANCE CURVE



TECHNICAL DATA

Fan

RPM

-

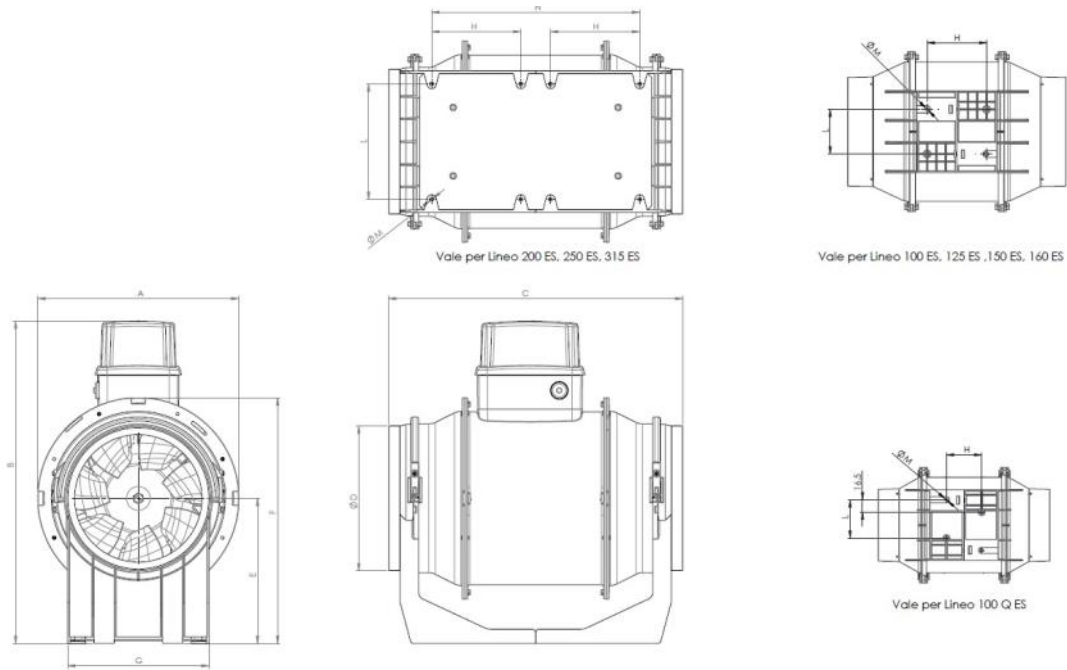
Approx. weight

1.9 kg

Max. Flow

305 m³/h

DIMENSIONS



Dimensions (mm)

A	188,5	B	240	C	303	D diam.	96	E	101.5
F	189	G	90	H	60	L	80	M diam.	5.5

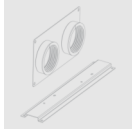
WIRING DIAGRAM

FOR ELECTRICAL SCHEMES
PLEASE SEE THE USER MANUAL

ACCESSORIES



PROTECTION GRILLE
LINEO-G 100 (protection grille)
REF: 22701



Kit for parallel application.
LINEO-PF 100 (parallel installation kit)
REF: 22577



Coupling for series application.
LINEO-C 100 (series installation kit)
REF: 22584



Potentiometer
POT-IT (potentiometer)
REF: 12826



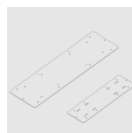
Electronic speed controller
IREM-D (speed controller)
REF: 12867



SENSOR
C SMOKE (smoke sensor)
REF: 12993



SENSOR
C PIR (passive infrared sensor)
REF: 12998



Bracket for series application.
LINEO-SF 500 (series installation plate)
REF: 22593



Potentiometer
POT (potentiometer)
REF: 12828



SENSOR
C TEMP (temperature sensor)
REF: 12992



SENSOR
C HCS (humidity sensor)
REF: 12994



SENSOR
C TIMER
REF: 12999