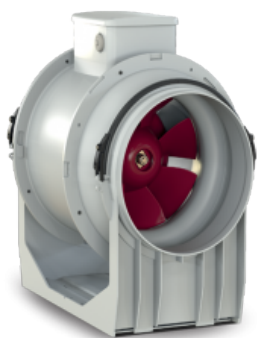


## LINEO 250 ES (17168)

### GENERAL DATA

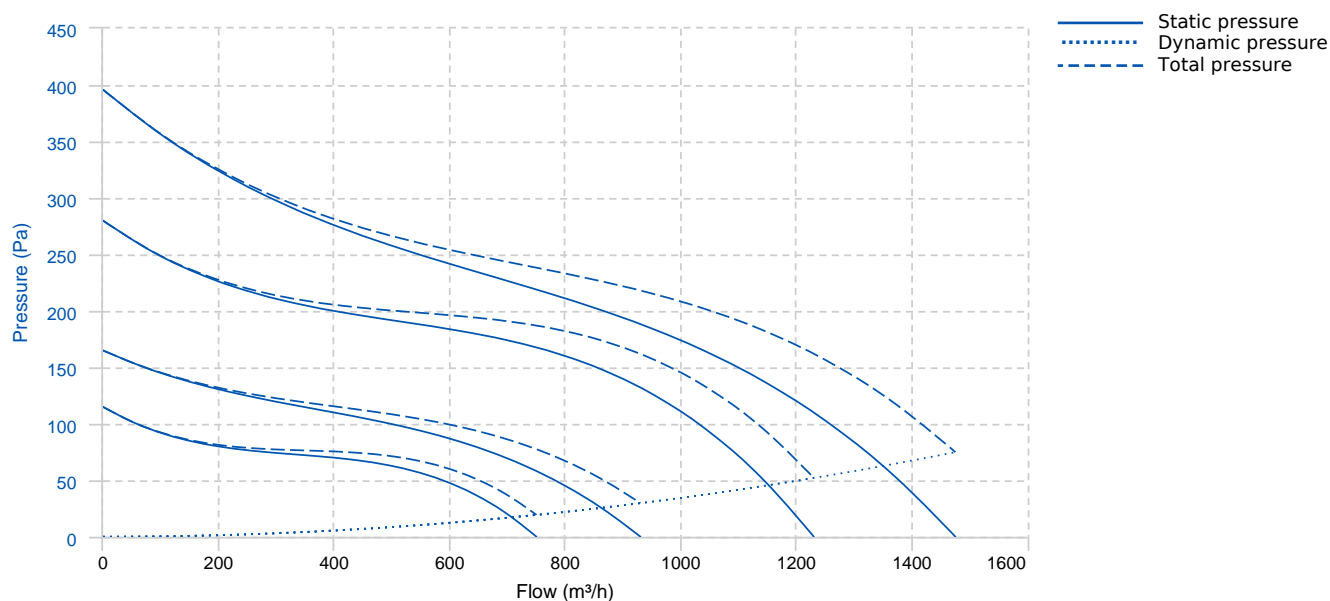


#### Energy-saving mixed flow fans

The appliances of the LINEO ES series adopt electronically controlled motors (EC brushless), which guarantee very low specific consumption. Speed adjustment is permitted by potentiometer (signal 0-10 V) or, alternatively, by using the two-speed option, selectable by external switch and can be set to installation in a predefined range.

- Fire resistant plastic resin construction, class E2, according to ISO EN 11925-2:2010, in areas overlooking the engine and electrical components.
- EC Brushless motor, thermally protected, with shaft mounted on ball bearing supports, combined with a helical-centrifugal impeller.
- High degree of water resistance: IPX5 (if installed in duct).
- Equipped with a safety device for over-temperature thermofuse.
- Speed adjustment via potentiometer (signal 0 - 10 V) or 2-speed switch (the two speeds can be set to installation in a predefined range).

### PERFORMANCE CURVE



### TECHNICAL DATA

#### Fan

RPM

-

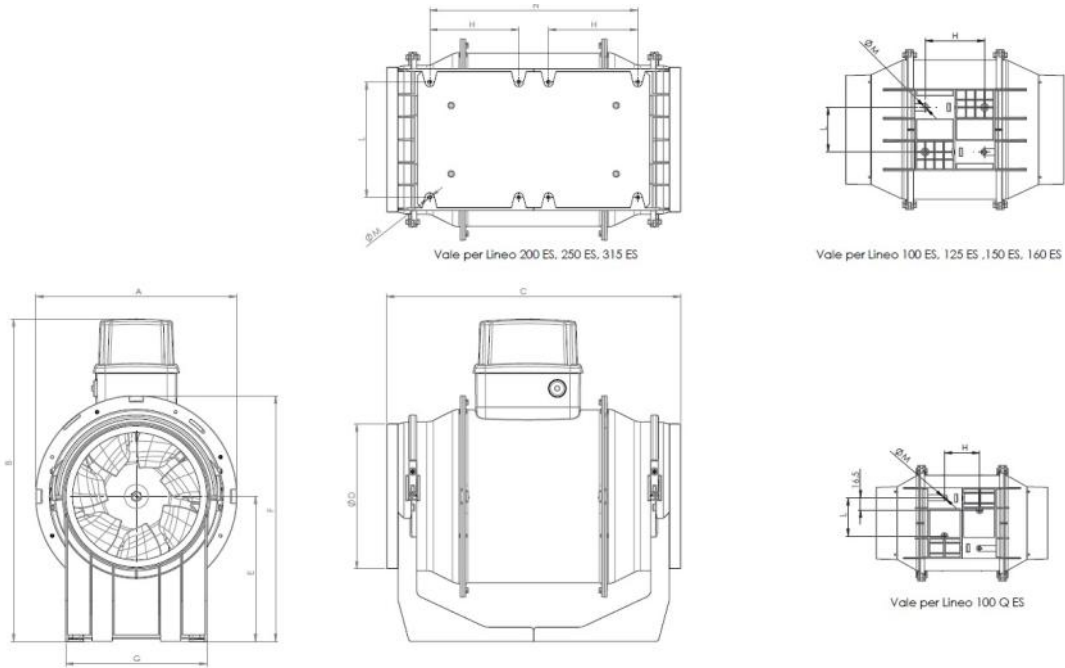
Approx. weight

5.3 kg

Max. Flow

1475 m³/h

## DIMENSIONS



### Dimensions (mm)

A	300	B	377.5	C	322	D diam.	243	E	190
F	329	G	200	H	70	L	170	M diam.	6.5
N	174.5								

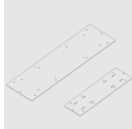
## WIRING DIAGRAM

FOR ELECTRICAL SCHEMES  
PLEASE SEE THE USER MANUAL

## ACCESSORIES



**PROTECTION GRILLE**  
**LINEO-G 250 (protection grille)**  
**REF: 22706**



**Bracket for series application.**  
**LINEO-SF 700 (series installation plate)**  
**REF: 22594**



**Potentiometer  
POT-IT (potentiometer)**  
REF: 12826



**Potentiometer  
POT (potentiometer)**  
REF: 12828



**SENSOR  
C TEMP (temperature sensor)**  
REF: 12992



**SENSOR  
C SMOKE (smoke sensor)**  
REF: 12993



**SENSOR  
C HCS (humidity sensor)**  
REF: 12994



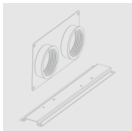
**SENSOR  
C PIR (passive infrared sensor)**  
REF: 12998



**SENSOR  
C TIMER**  
REF: 12999



**Coupling for series application.  
LINEO-C 250 (series installation kit)**  
REF: 22589



**Kit for parallel application.  
LINEO-PF 250 (parallel installation kit)**  
REF: 22582