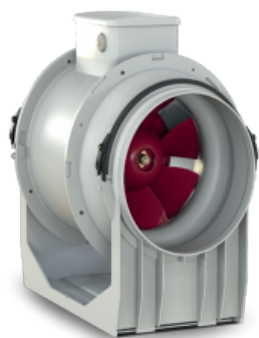


LINEO 315 ES (17169)

GENERAL DATA

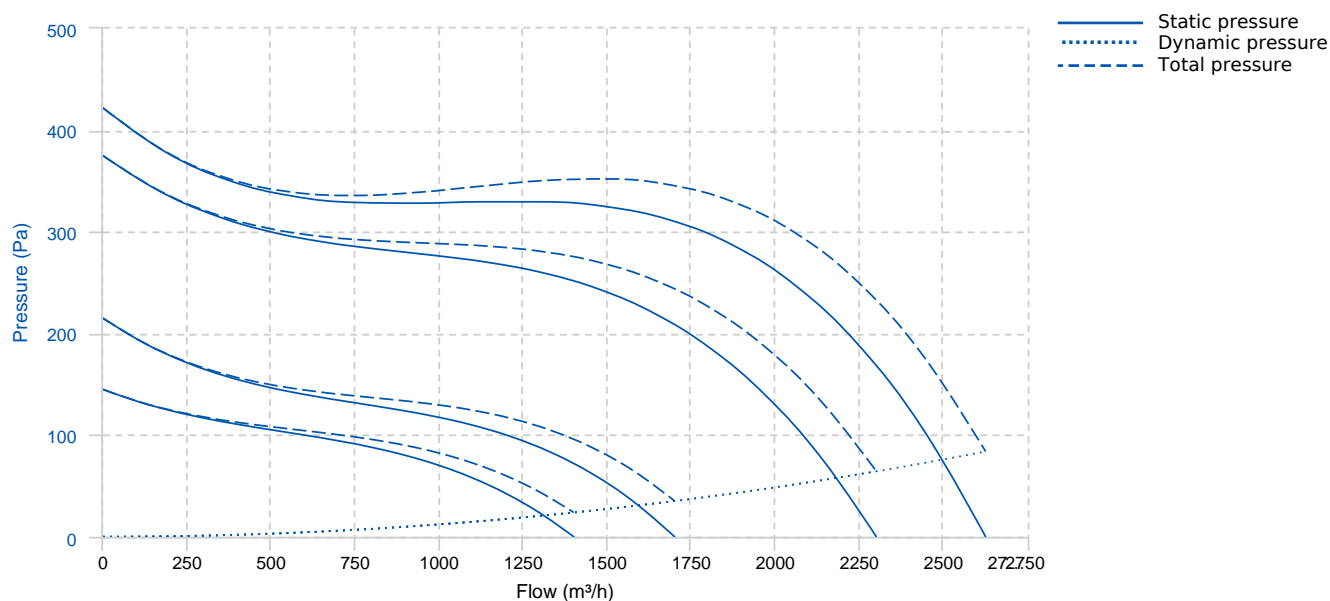


Energy-saving mixed flow fans

The appliances of the LINEO ES series adopt electronically controlled motors (EC brushless), which guarantee very low specific consumption. Speed adjustment is permitted by potentiometer (signal 0-10 V) or, alternatively, by using the two-speed option, selectable by external switch and can be set to installation in a predefined range.

- Fire resistant plastic resin construction, class E2, according to ISO EN 11925-2:2010, in areas overlooking the engine and electrical components.
- EC Brushless motor, thermally protected, with shaft mounted on ball bearing supports, combined with a helical-centrifugal impeller.
- High degree of water resistance: IPX5 (if installed in duct).
- Equipped with a safety device for over-temperature thermofuse.
- Speed adjustment via potentiometer (signal 0 - 10 V) or 2-speed switch (the two speeds can be set to installation in a predefined range).

PERFORMANCE CURVE



TECHNICAL DATA

Fan

RPM

-

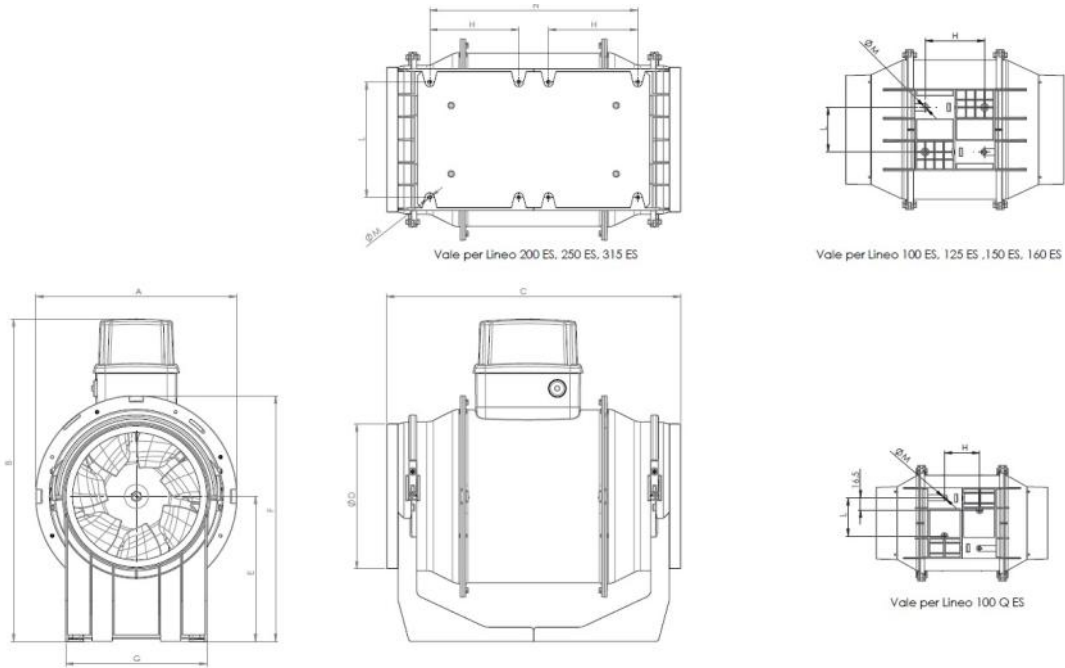
Approx. weight

9.5 kg

Max. Flow

2625 m³/h

DIMENSIONS



Dimensions (mm)

A	373	B	506	C	420	D diam.	307	E	224
F	398	G	309	H	110	L	25	M diam.	8.5
N	259.5								

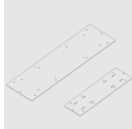
WIRING DIAGRAM

FOR ELECTRICAL SCHEMES
PLEASE SEE THE USER MANUAL

ACCESSORIES



PROTECTION GRILLE
LINEO-G 315 (protection grille)
REF: 22707



Bracket for series application.
LINEO-SF 700 (series installation plate)
REF: 22594



**Potentiometer
POT-IT (potentiometer)**
REF: 12826



**Potentiometer
POT (potentiometer)**
REF: 12828



**SENSOR
C TEMP (temperature sensor)**
REF: 12992



**SENSOR
C SMOKE (smoke sensor)**
REF: 12993



**SENSOR
C HCS (humidity sensor)**
REF: 12994



**SENSOR
C PIR (passive infrared sensor)**
REF: 12998



**SENSOR
C TIMER**
REF: 12999



**Coupling for series application.
LINEO-C 315 (series installation kit)**